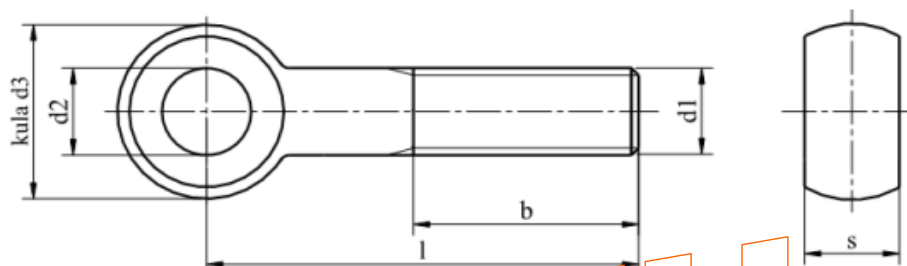


FICHA TÉCNICA

TORNILLO DIN 444-B



UGATU

DIMENSIONES

<i>d</i>		M5	M6	M8	M10	M12	M16	M20	M24	(M27)	M30
<i>P</i>		0,8	1	1,25	1,5	1,75	2	2,5	3	3	3,5
<i>b₀^{+2P}</i>	<i>l</i> ≤ 125	16	18	22	26	30	38	46	54	60	66
	125 < <i>l</i> ≤ 200	-	-	28	32	36	44	52	60	66	72
	<i>l</i> > 200	-	-	-	-	-	57	65	73	79	85
<i>d₂</i>	H9	5	6	8	10	12	16	18	22	25	28
<i>d₃</i>	<i>max</i>	12	14	18	20	25	32	40	45	50	55
	<i>min</i>	11,57	13,57	17,57	19,48	24,48	31,38	39,38	44,38	49,38	54,26
<i>S_{max}</i>		6	7	9	12	14	17	22	25	27	30

<i>d</i>		(M33)	M36	(M39)
<i>P</i>		3,5	4	4
<i>b₀^{+2P}</i>	<i>l</i> ≤ 125	-	-	-
	125 < <i>l</i> ≤ 200	78	84	90
	<i>l</i> > 200	91	97	103
<i>d₂</i>	H9	30	32	35
<i>d₃</i>	<i>max</i>	60	65	70
	<i>min</i>	59,26	64,26	69,26
<i>S_{max}</i>		34	38	41

DISTANCIA DESDE EL ÚLTIMO EXTREMO DE ROSCA HASTA EL CENTRO DEL OJO

<i>d</i>	M5	M6	M8	M10	M12	M16	M20	M24	M27	M30	M33	M36	M39
<i>distance</i>	11	14	16	18	23	27	32	40	42	46	54	59	61



COINDICIONES TÉCNICAS DE SUMINISTRO

Material		Steel
General requirements	Norma Standard	DIN 267-1
Thread	Tolerance	<i>For product grade B = 6g</i>
	Norma Standard	DIN 13-13
Mechanical properties	Property class	4.6 or 5.6 or 8.8 as agreed <i>other property classes or materials upon agreements</i>
	Norma Standard	ISO 898-1
Tolerances	Product grade	B
	Norma Standard	ISO 4759-1
Finish		<i>Limits for surface roughness are covered in DIN 267-2.</i> <i>Limits for surface discontinuities are covered in DIN 267-19.</i> <i>Requirements for electroplating are covered in DIN 267-9.</i> <i>Requirements for hot dip galvanized are covered in DIN 267-10.</i>
Acceptability		<i>Acceptance procedure is covered in DIN 267-5.</i>